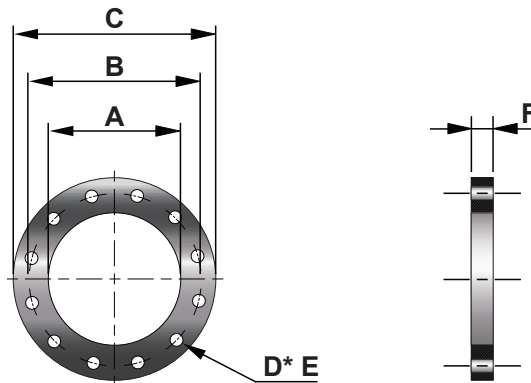


FLANGES



Type DIN 2573 PN6



AXCES Article. No	Inch	NB	Pipe	A inside diameter	B pitch circle diameter	C outside diameter	D number of holes	E diameter of holes	F thickness of flanges	Weight of flange
212000120010	1"	25	33.4	35	75	100	4	11	12	1 kg
212000120013	1,25"	32	42.2	43	90	120	4	14	12	1 kg
212000120015	1,5"	40	48.3	49	100	130	4	14	12	1 kg
212000120020	2"	50	60.3	61	110	140	4	14	12	2 kg
212000120025	2,5"	65	76.1	73	130	160	4	14	12	2 kg
212000120030	3"	80	88.9	90	150	190	4	18	12	2 kg
212000120040	4"	100	114.3	116	170	210	4	18	12	2 kg
212000160050	5"	125	139.7	142	200	240	8	18	16	4 kg
212000160060	6"	150	168.3	171	225	265	8	18	16	4 kg
212000160080	8"	200	219.1	222	280	320	8	18	16	5 kg
212000160100	10"	250	273.0	276	335	375	12	18	16	6 kg
212000160120	12"	300	323.9	327	395	440	12	22	16	8 kg
212000160140	14"	350	355.6	360	445	490	12	22	16	10 kg
212000160160	16"	400	406.4	411	495	540	16	22	16	11 kg
212000160180	18"	450	457.2	461	550	595	16	22	16	13 kg
212000200200	20"	500	508.0	512	600	645	20	22	16	14 kg
212000200240	24"	600	609.6	614	705	755	20	26	20	22 kg
212000200280	28"	700	711.2	716	810	860	24	26	20	25 kg
212000200320	32"	800	812.8	818	920	975	24	30	20	31 kg
212000200360	36"	900	914.4	920	1020	1075	24	30	20	35 kg
212000200400	40"	1000	1016.0	1022	1120	1022	28	30	20	38 kg

All sizes in mm

Flanges

Hole pattern according type DIN 2573 - PN6

Material

Flanges are produced out of Steel S235JRG2

Range

Diameter range from 33,4 mm up to 1016 mm

Thickness

From minimum 12 mm up to maximum 20 mm

Temperature

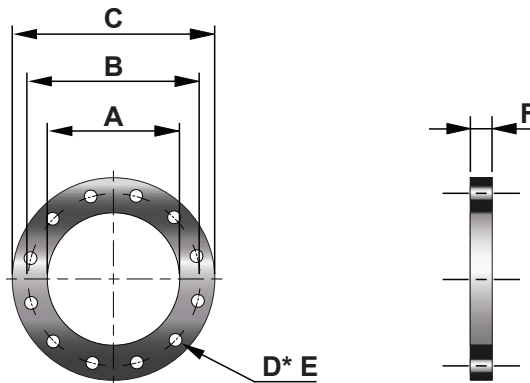
The maximum allowable temperature is 600 °C



FLANGES



Type DIN 2576 PN10



AXCES Article. No	Inch	NB	Pipe	A inside diameter	B pitch circle diameter	C outside diameter	D number of holes	E diameter of holes	F thickness of flanges	Weight of flange
212010120010	1"	25	33.4	35	85	115	4	14	12	1 kg
212010120013	1,25"	32	42.2	43	100	140	4	18	12	1 kg
212010120015	1,5"	40	48.3	49	110	150	4	18	12	1 kg
212010120020	2"	50	60.3	61	125	165	4	18	12	2 kg
212010120025	2,5"	65	76.1	77	145	185	4	18	12	2 kg
212010120030	3"	80	88.9	90	160	200	8	18	12	2 kg
212010120040	4"	100	114.3	116	180	220	8	18	12	2 kg
212010160050	5"	125	139.7	142	210	250	8	18	16	4 kg
212010160060	6"	150	168.3	171	240	285	8	22	16	4 kg
212010160080	8"	200	219.1	222	295	340	8	22	16	5 kg
212010160100	10"	250	273.0	276	350	395	12	22	16	6 kg
212010160120	12"	300	323.9	327	400	445	12	22	16	8 kg
212010200140	14"	350	355.6	360	460	505	16	22	20	10 kg
212010200160	16"	400	406.4	411	515	565	16	26	20	11 kg
212010200180	18"	450	457.2	461	565	615	20	26	20	13 kg
212010200200	20"	500	508.0	512	620	670	20	26	20	14 kg
212010200240	24"	600	609.6	614	725	780	20	30	20	22 kg
212010200280	28"	700	711.2	716	840	895	24	30	20	25 kg
212010200320	32"	800	812.8	818	950	1015	24	33	20	31 kg
212010200360	36"	900	914.4	920	1050	1115	28	33	20	35 kg
212010200400	40"	1000	1016.0	1022	1160	1230	28	36	20	38 kg

All sizes in mm

Flanges

Hole pattern according type DIN 2576 - PN10

Material

Flanges are produced out of Steel S235JRG2

Range

Diameter range from 33,4 mm up to 1016 mm

Thickness

From minimum 12 mm up to maximum 20 mm

Temperature

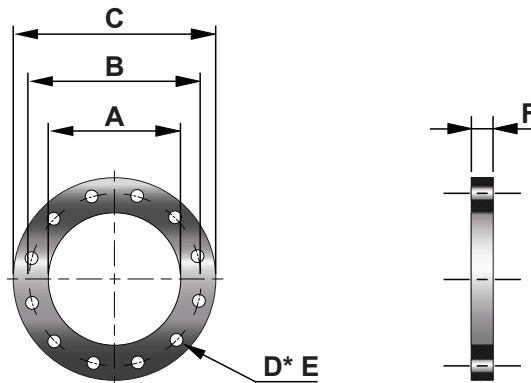
The maximum allowable temperature is 600 °C



FLANGES



Type DIN 86044



AXCES Article. No	Inch	NB	Pipe	A inside diameter	B pitch circle diameter	C outside diameter	D number of holes	E diameter of holes	F thickness of flanges	Weight of flange
212020160100	10"	250	273.0	276	335	375	12	18	16	6 kg
212020160120	12"	300	323.9	327	395	440	12	22	16	8 kg
212020160140	14"	350	355.6	360	445	490	12	22	16	10 kg
212020160160	16"	400	406.4	411	495	540	16	22	16	11 kg
212020160180	18"	450	457.2	461	550	595	16	22	16	13 kg
212020160200	20"	500	508.0	512	600	645	20	22	16	14 kg
212020200220	22"	550	560.0	563	650	703	20	22	20	20 kg
212020200240	24"	600	609.6	614	700	754	20	22	20	22 kg
212020200260	26"	650	664.0	665	750	805	20	22	20	24 kg
212020200280	28"	700	711.2	716	800	856	24	22	20	25 kg
212020200300	30"	750	762.0	767	860	907	24	22	20	27 kg
212020200320	32"	800	812.8	818	900	958	24	22	20	29 kg
212020200360	36"	900	914.4	920	1010	1060	28	22	20	32 kg
212020200380	38"	950	698.0	970	1060	1110	28	22	20	34 kg
212020200400	40"	1000	1016.0	1022	1110	1167	32	22	20	36 kg
212020200440	44"	1100	1120.0	1126	1210	1266	32	22	20	39 kg
212020200480	48"	1200	1220.0	1226	1310	1366	36	22	20	42 kg
212020200520	52"	1300	1324.0	1326	1410	1466	40	22	20	45 kg

All sizes in mm

Flanges

Hole pattern according type DIN 86044

Material

Flanges are produced out of Steel S235JRG2

Range

Diameter range from 273 mm up to 1324 mm

Thickness

From minimum 16 mm up to maximum 20 mm

Temperature

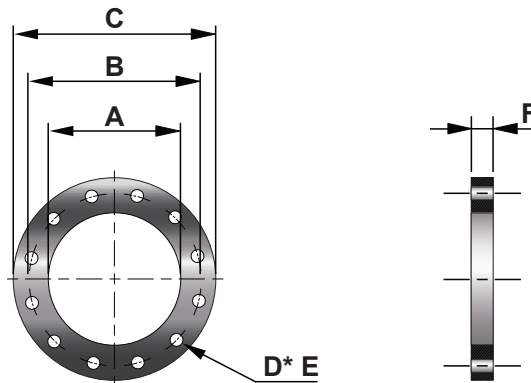
The maximum allowable temperature is 600 °C



FLANGES



Type ANSI 150



AXCES Article. No	Inch	NB	Pipe	A inside diameter	B pitch circle diameter	C outside diameter	D number of holes	E diameter of holes	F thickness of flanges	Weight of flange
212030150010	1"	25	33.4	35	79	110	4	16	15	1 kg
212030160013	1,25"	32	42.2	43	89	120	4	16	16	1 kg
212030180015	1,5"	40	48.3	49	99	130	4	16	18	1 kg
212030200020	2"	50	60.3	61	121	150	4	19	20	2 kg
212030230025	2,5"	65	76.1	73	140	180	4	19	23	4 kg
212030240030	3"	80	88.9	90	153	190	4	19	24	4 kg
212030240040	4"	100	114.3	116	191	230	8	19	24	6 kg
212030240050	5"	125	139.7	142	216	255	8	22	24	6 kg
212030260060	6"	150	168.3	171	242	280	8	22	26	8 kg
212030290080	8"	200	219.1	222	299	345	8	22	29	13 kg
212030310100	10"	250	273.0	276	362	405	12	26	31	17 kg
212030320120	12"	300	323.9	327	432	485	12	26	32	27 kg
212030350140	14"	350	355.6	360	476	535	12	30	35	35 kg
212030370160	16"	400	406.4	411	540	600	16	30	37	42 kg
212030400180	18"	450	457.2	461	578	635	16	33	40	53 kg
212030430200	20"	500	508.0	512	635	700	20	33	43	65 kg
212030480240	24"	600	609.6	614	750	815	20	36	48	92 kg

All sizes in mm

Flanges

Hole pattern according type AXCES Standard

Material

Flanges are produced out of Steel S235JRG2

Range

Diameter range from 33,4 mm up to 609,6 mm

Thickness

From minimum 15 mm up to maximum 48 mm

Temperature

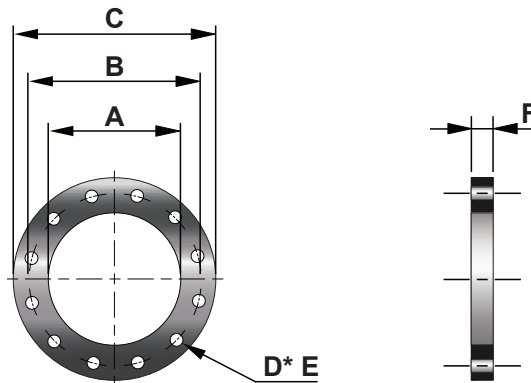
The maximum allowable temperature is 600 °C



FLANGES



Type JIS B2220 5K



AXCES Article. No	Inch	NB	Pipe	A inside diameter	B pitch circle diameter	C outside diameter	D number of holes	E diameter of holes	F thickness of flanges	Weight of flange
212040100010	1"	25	33.4	35	75	95	4	12	10	1 kg
212040100013	1,25"	32	42.2	43	90	115	4	15	12	1 kg
212040100015	1,5"	40	48.3	49	95	120	4	15	12	1 kg
212040140020	2"	50	60.3	61	105	130	4	15	14	1 kg
212040140025	2,5"	65	76.1	77	130	155	4	15	14	2 kg
212040140030	3"	80	88.9	90	145	180	4	19	14	2 kg
212040160040	4"	100	114.3	116	165	200	8	19	16	2 kg
212040160050	5"	125	139.7	142	200	235	8	19	16	3 kg
212040180060	6"	150	168.3	167	230	265	8	19	18	4 kg
212040200080	8"	200	219.1	218	280	320	8	23	20	6 kg
212040220100	10"	250	273.0	270	345	385	12	23	22	9 kg
212040220120	12"	300	323.9	321	390	430	12	23	22	10 kg
212040240140	14"	350	355.6	358	435	480	12	25	24	14 kg
212040240160	16"	400	406.4	409	495	540	16	25	24	17 kg
212040240180	18"	450	457.2	460	555	605	16	25	24	22 kg
212040240200	20"	500	508.0	511	605	655	20	25	24	23 kg
212040260240	24"	600	609.6	613	715	770	20	27	26	32 kg
212040260280	28"	700	711.2	715	820	875	24	27	26	38 kg
212040280320	32"	800	812.8	817	930	995	24	33	28	52 kg
212040300360	36"	900	914.4	919	1030	1095	24	33	30	61 kg
212040320400	40"	1000	1016.0	1021	1130	1195	28	33	32	71 kg

All sizes in mm

Flanges

Hole pattern according type JIS Standard

Material

Flanges are produced out of Steel S235JRG2

Range

Diameter range from 33,4 mm up to 1016 mm

Thickness

From minimum 10 mm up to maximum 32 mm

Temperature

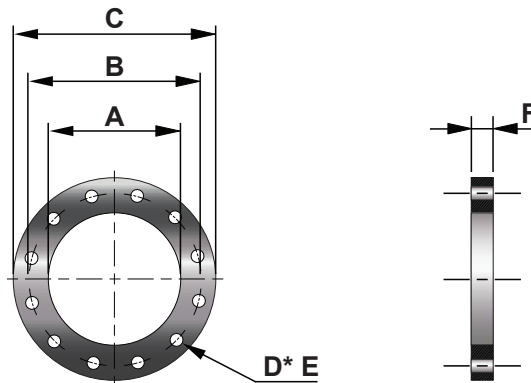
The maximum allowable temperature is 600 °C



FLANGES



Type JIS B2220 10K



AXCES Article. No	Inch	NB	Pipe	A inside diameter	B pitch circle diameter	C outside diameter	D number of holes	E diameter of holes	F thickness of flanges	Weight of flange
212050140010	1"	25	34.5	35	90	125	4	19	14	1 kg
212050160013	1,25"	32	43.2	43	100	135	4	19	16	2 kg
212050160015	1,5"	40	49.1	49	105	140	4	19	16	2 kg
212050160020	2"	50	61.1	61	120	155	4	19	16	2 kg
212050180025	2,5"	65	77.1	77	140	175	4	19	18	3 kg
212050180030	3"	80	90.0	90	150	185	8	19	18	3 kg
212050180040	4"	100	115.4	116	175	210	8	19	18	3 kg
212050200050	5"	125	141.2	142	210	250	8	23	20	5 kg
212050220060	6"	150	166.6	167	240	280	8	23	22	6 kg
212050220080	8"	200	218.0	218	290	330	12	23	22	8 kg
212050240100	10"	250	269.5	270	355	400	12	25	24	12 kg
212050240120	12"	300	321.0	321	400	445	16	25	24	14 kg
212050260140	14"	350	358.1	358	445	490	16	25	26	16 kg
212050280160	16"	400	409.0	409	510	560	16	27	28	23 kg
212050300180	18"	450	460.0	460	565	620	20	27	30	30 kg
212050300200	20"	500	511.0	511	620	675	20	27	30	34 kg
212050320240	24"	600	613.0	613	730	795	24	33	32	46 kg
212050340280	28"	700	715.0	715	840	905	24	33	34	60 kg
212050360320	32"	800	817.0	817	950	1020	28	33	36	76 kg
212050380360	36"	900	919.0	919	1050	1120	28	33	38	89 kg
212050400400	40"	1000	1021.0	1021	1160	1235	28	39	40	109 kg

All sizes in mm

Flanges

Hole pattern according type JIS Standard

Material

Flanges are produced out of Steel S235JRG2

Range

Diameter range from 34,5 mm up to 1021 mm

Thickness

From minimum 14 mm up to maximum 40 mm

Temperature

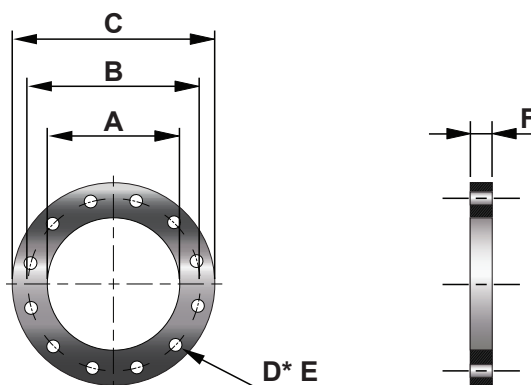
The maximum allowable temperature is 600 °C



FLANGES



Type Axces Standard



AXCES Article. No	Inch	NB	Pipe	A inside diameter	B pitch circle diameter	C outside diameter	D number of holes	E diameter of holes	F thickness of flanges	Weight of flange
212060110010	1"	25	33.4	35	66	93	4	12	10	1 kg
212060110013	1,25"	32	42.2	43	68	96	4	12	10	1 kg
212060110015	1,5"	40	48.3	49	75	103	4	12	10	1 kg
212060110020	2"	50	60.3	61	97	129	4	14	10	1 kg
212060110025	2,5"	65	76.1	77	108	140	4	14	10	1 kg
212060120030	3"	80	88.9	90	132	169	4	18	12	1 kg
212060120040	4"	100	114.3	116	154	191	4	18	12	2 kg

All sizes in mm

Flanges

Hole pattern according type ANSI Standard

Material

Flanges are produced out of Steel S235JRG2

Range

Diameter range from 33,4 mm up to 114,3 mm

Thickness

From minimum 10 mm up to maximum 12 mm

Temperature

The maximum allowable temperature is 600 °C

